

**PLEASE CHECK WWW.MOLEX.COM FOR LATEST PART INFORMATION**

**Part Number:** [0891990019](#)  
**Status:** **Active**  
**Description:** 1.27mm Pitch PC Card I/O Receptacle - SMT

**Documents:**

[3D Model](#) [RoHS Certificate of Compliance \(PDF\)](#)  
[Drawing \(PDF\)](#)

**General**

|                |                       |
|----------------|-----------------------|
| Product Family | Memory Card Sockets   |
| Series         | <a href="#">89199</a> |
| Button Type    | N/A                   |
| Component Type | I/O Receptacle (Card) |
| Product Name   | PC Card               |
| Type           | II                    |

**Physical**

|                                |                           |
|--------------------------------|---------------------------|
| Card Detection Switch          | N/A                       |
| Circuits (Loaded)              | 15                        |
| Durability (mating cycles max) | 10,000                    |
| Ejector Button Side            | No Ejector Button Present |
| Entry Angle                    | 90° Angle (Side Entry)    |
| Keying to Mating Part          | Yes                       |
| PCB Mounting Side              | N/A                       |
| PCB Retention                  | None                      |
| Packaging Type                 | Tray                      |
| Pitch - Mating Interface (in)  | 0.050 In                  |
| Pitch - Mating Interface (mm)  | 1.27 mm                   |
| Ports                          | 1                         |
| Temperature Range - Operating  | -20°C to +90°C            |

**Electrical**

|                               |         |
|-------------------------------|---------|
| Current - Maximum per Contact | 0.5A    |
| Shielded                      | No      |
| Voltage - Maximum             | 100V AC |
| Voltage Key                   | 5.0V    |

**Material Info**

**EU RoHS** **China RoHS**

**Compliance Status**

**Not Reviewed**

**REACH SVHC**

**Not Reviewed**

**Halogen-Free**

**Status**

**Not Reviewed**

**Need more information on product environmental compliance?**

Email [productcompliance@molex.com](mailto:productcompliance@molex.com)  
 For a multiple part number RoHS Certificate of Compliance, [click here](#)

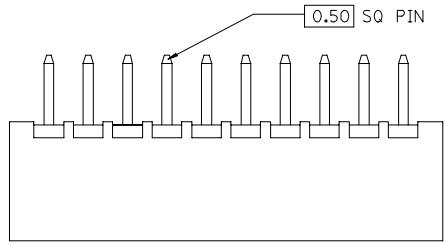
Please visit the [Contact Us](#) section for any non-product compliance questions.

**Search Parts in this Series**

[89199Series](#)

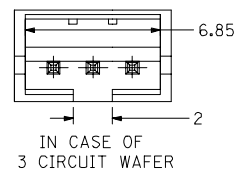
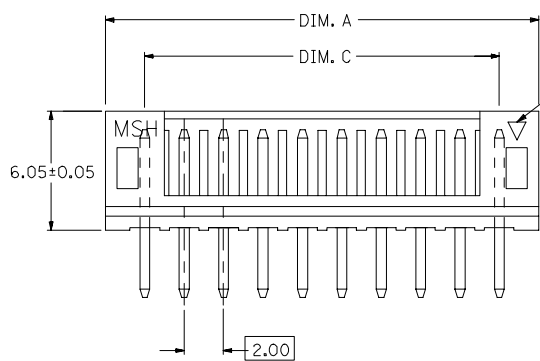
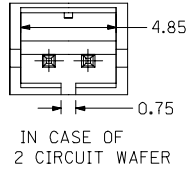
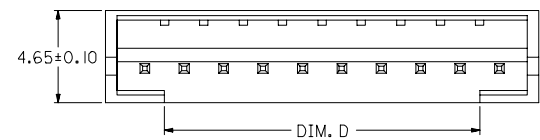
**Mates With**

[89075](#)



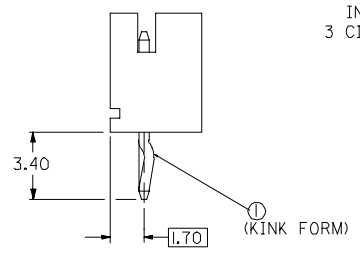
PART NO. LEGEND  
 89400 - \*\* 2 \*  
 CKT SIZE — \*\* — COLOR OPTION  
 0 - NATURAL (WHITE)  
 1 - BLACK  
 2 - RED  
 3 - YELLOW  
 4 - BLUE  
 5 - GREEN

| CIRCUITS | ORDER NO.  | DIM. C | DIM. D | DIM. A |
|----------|------------|--------|--------|--------|
| 2        | 89400-022* | 2.00   | 0.75   | 6.00   |
| 3        | 89400-032* | 4.00   | 2.00   | 8.00   |
| 4        | 89400-042* | 6.00   | 4.00   | 10.00  |
| 5        | 89400-052* | 8.00   | 6.00   | 12.00  |
| 6        | 89400-062* | 10.00  | 8.00   | 14.00  |
| 7        | 89400-072* | 12.00  | 10.00  | 16.00  |
| 8        | 89400-082* | 14.00  | 12.00  | 18.00  |
| 9        | 89400-092* | 16.00  | 14.00  | 20.00  |
| 10       | 89400-102* | 18.00  | 16.00  | 22.00  |
| 11       | 89400-112* | 20.00  | 18.00  | 24.00  |
| 12       | 89400-122* | 22.00  | 20.00  | 26.00  |
| 13       | 89400-132* | 24.00  | 22.00  | 28.00  |
| 14       | 89400-142* | 26.00  | 24.00  | 30.00  |
| 15       | 89400-152* | 28.00  | 26.00  | 32.00  |
| 16       | 89400-162* | 30.00  | 28.00  | 34.00  |

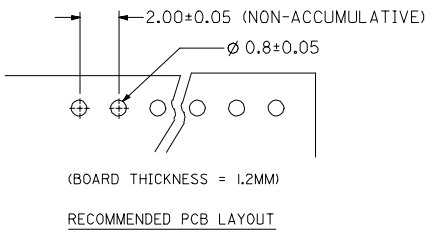


KINK TO BE APPLIED AS FOLLOW

| CKT NO.<br>CKT      | CTK NO. |   |   |   |   |     |     |   |
|---------------------|---------|---|---|---|---|-----|-----|---|
|                     | 1       | 2 | 3 | 4 | 5 | N-2 | N-1 | N |
| 6 CKT (OR OVER ALL) | ⓪       | — | — | — | — | —   | —   | ⓪ |
| 5 CKT               | ⓪       | — | — | — | ⓪ | —   | —   | — |
| 4 CKT               | ⓪       | — | — | ⓪ | — | —   | —   | — |
| 3 CKT               | ⓪       | — | ⓪ | — | — | —   | —   | — |
| 2 CKT               | ⓪       | ⓪ | — | — | — | —   | —   | — |



- NOTE:
- MATERIALS : HOUSING - NYLON (PA66), UL94 V-0  
 COLOR : SEE OPTION  
 TERMINAL - BRASS
  - FINISHES : TERMINAL - TIN THICKNESS 127-254 MICROMETER OVER  
 NICKEL THICKNESS 2.54 MICROMETER MIN OVERALL  
 COPPER THICKNESS 1.07 MICROMETER MIN OVERALL
  - PRODUCT SPECIFICATION : PS-87369-0002
  - BULK PACK IN PVC BAG WITH 1000 PCS PER BAG.



|   |  |  |   |   |  |                     |
|---|--|--|---|---|--|---------------------|
| NEW RELEASE<br>EC NO: SH2006-0288<br>DRWN:DRU 2005/12/07<br>CHKD:HARVEY 2005/12/08<br>APPR:GCHEN 2005/12/09 | QUALITY SYMBOLS<br>▽=0<br>▽=0                        | GENERAL TOLERANCES (UNLESS SPECIFIED)<br>mm INCH<br>4 PLACES ± --- ± ---<br>3 PLACES ± --- ± ---<br>2 PLACES ± 0.25 ± ---<br>1 PLACE ± 0.25 ± ---<br>ANGULAR ± 2 ° | DIMENSION STYLE<br>IN/MM<br>DRAWN BY DATE<br>SAM SHIN 1998/10/22<br>CHECKED BY DATE<br>APPROVED BY DATE | SCALE<br>DESIGN UNITS<br>INCH<br>THIRD ANGLE PROJECTION   | TITLE<br>2.0MM WIRE-BOARD STRAIGHT HEADER WITH COINING<br>MOLEX MOLEX INCORPORATED | SHEET NO.<br>1 OF 1 |
|   | DRAFT WHERE APPLICABLE MUST REMAIN WITHIN DIMENSIONS | MATERIAL NO.<br>SEE TABLE  | DOCUMENT NO.<br>SD-89400-**2*   | THIS DRAWING CONTAINS INFORMATION THAT IS PROPRIETARY TO MOLEX INCORPORATED AND SHOULD NOT BE USED WITHOUT WRITTEN PERMISSION |  |                     |